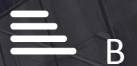




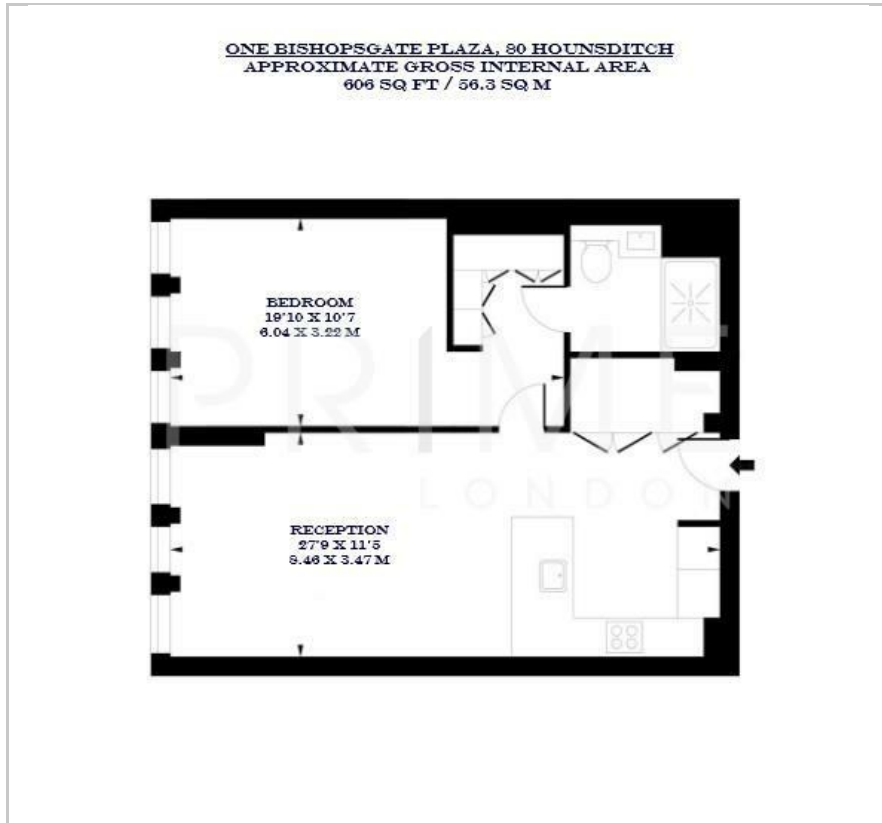
## One Bishopsgate Plaza

80 Houndsditch, The City, EC3A 7AB

£980 Per Week



## Floor Plan



## Area Map



## Energy Efficiency Graph



## Viewing

By appointment. Contact us on 0207 052 1075 if you wish to arrange a viewing appointment for this property, or require further information.

- One bedroom apartment      ▪ 606 sq ft (56.3 sqm)
- Fully furnished to a high standard      ▪ Ample storage throughout
- Access to Pan Pacific's 5 star facilities      ▪ 24 hour concierge



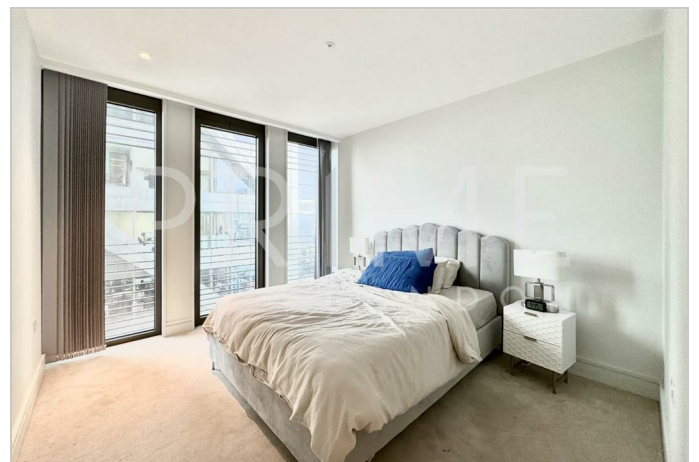
This outstanding high floor one bedroom apartment, located in the prestigious One Bishopsgate Plaza, is available for lease through Prime London.

Offering approximately 606 sq ft (56.3 sqm) of living space, the apartment boasts a spacious open-plan reception that seamlessly connects to a contemporary, fully integrated kitchen with Miele appliances and elegant finishes throughout.

The generously sized double bedroom is fitted with built in wardrobes and provides a serene escape, complemented by a stylish bathroom complete with high-end fixtures.

Residents of One Bishopsgate Plaza enjoy the benefit of a 24 hour concierge and exclusive access to the five-star amenities of the Pan Pacific Hotel, including an 18.5m infinity pool, gym, spa, and optional hotel services such as room service and housekeeping.

Ideally located in the heart of London's Square Mile, this iconic development is just moments from world-renowned restaurants, luxury retail, and exceptional transport connections, making it one of the City's most coveted addresses.



These particulars, whilst believed to be accurate are set out as a general outline only for guidance and do not constitute any part of an offer or contract. Intending purchasers should not rely on them as statements of representation of fact, but must satisfy themselves by inspection or otherwise as to their accuracy. No person in this firm's employment has the authority to make or give any representation or warranty in respect of the property.